

Impact on Exit Prices of Including Interruptibles

Gas TCMF

Eddie Blackburn

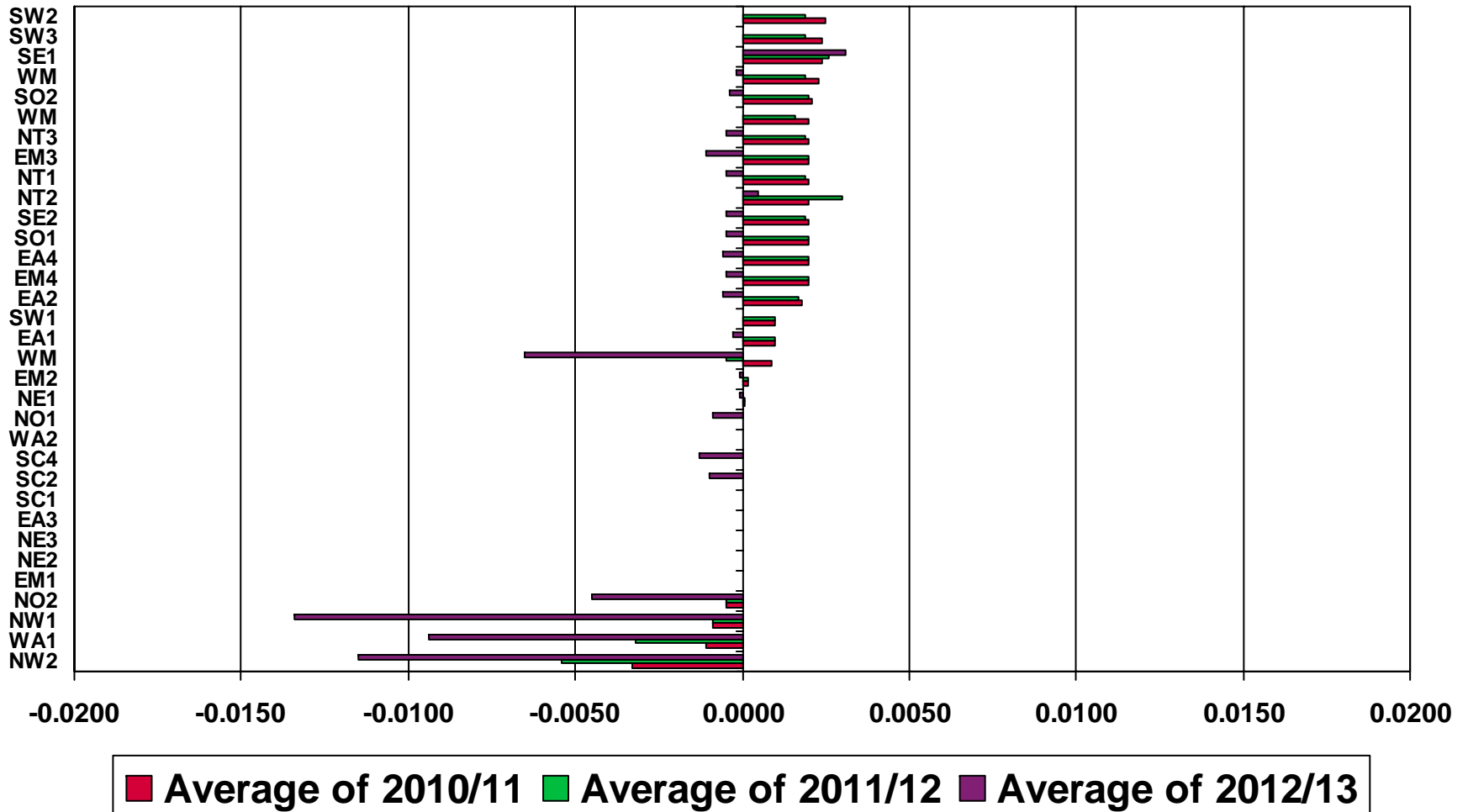
10th October 2006

Assumptions

- ◆ Transportation Model
 - ◆ Analysis for 2010/11, 2011/12 and 2012/13
 - ◆ Anuitisation Factor 0.10772
 - ◆ Expansion Constant £2223/GWhkm
- ◆ Demand Levels
 - ◆ NTS DC Interruptibles included
 - ◆ DN offtakes at firm level
 - ◆ Bi-directional sites modelled as supplies
 - ◆ Interconnectors
 - ◆ Storage
- ◆ Example data for NTS Exit Zones/Areas
 - ◆ Data will be published for all offtakes on the National Grid - Gas TCMF website

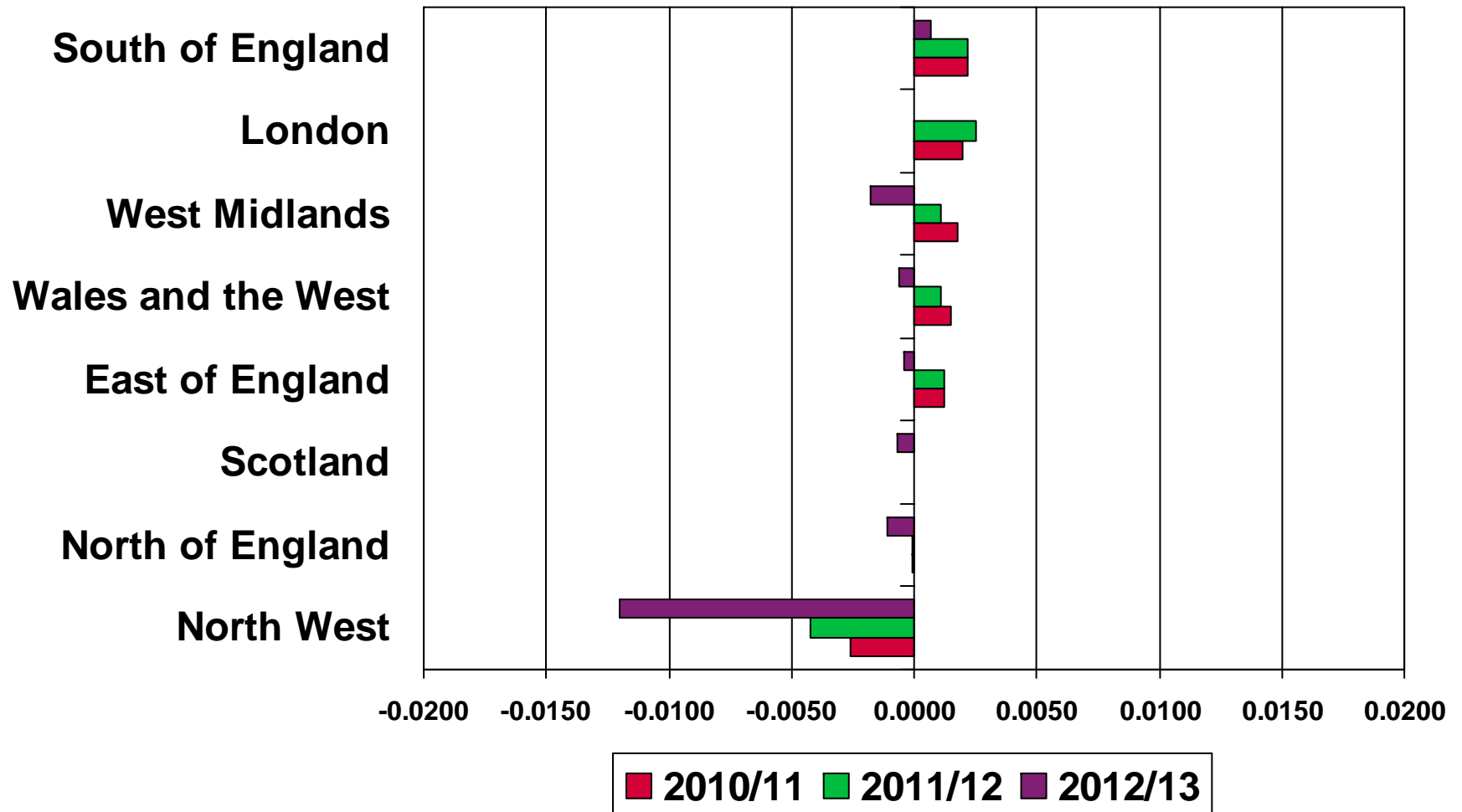
Impact on NTS Exit Zones

(Impact on Exit prices of including 'Interruptibles')



Impact on NTS Areas

(Impact on Exit prices of including 'Interruptibles')



Impact on NTS

(Impact on Exit prices of including 'Interruptibles')

